

TECHNICAL SCIENTIFIC REPORT

BUTCHER'S BROOM DRY EXTRACT

(*Ruscus aculeatus* L.)

BOTANICAL DESCRIPTION:

Dried cut root and rhizome of *Ruscus aculeatus* L.

Accurate selection and identification of Butcher's broom root and rhizome according to current monograph of European Pharmacopoeia "1847: Butcher's broom".



EXTRACT INFORMATION:

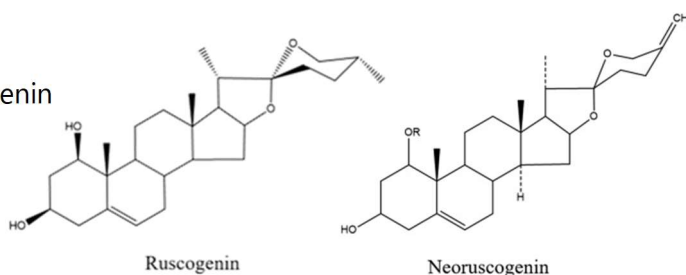
BUTCHER'S BROOM DRY EXTRACT is obtained from roots and rhizomes of *Ruscus aculeatus* L. by hydroalcoholic extraction.

INCI Name: RUSCUS ACULEATUS ROOT EXTRACT

CAS: 84012-38-4

EINECS: 281-682-9

ANALYTICAL MARKERS: Ruscogenin and Neoruscogenin



Select Botanicals Extracts comply with the requirements of any relevant monograph in the European Pharmacopoeia and/or European Directives applicable to the end use of the extract.

Select Botanical, S.L. manufactures Highest Quality Extracts following strictest Quality Management System in compliance with the "Good Manufacturing Practices" (GMP) requirements, carrying on the last manufacturing steps in classified areas (Clean Rooms).

PHYTOTHERAPY INDICATIONS:

- Indicated as a supportive therapy for symptoms of chronic venous insufficiency, such as painful, tired, and heavy legs, tingling and swelling. ⁽⁶⁾
 - Traditional herbal medicinal product to relieve symptoms of discomfort and heaviness of legs related to minor venous circulatory disturbances. ⁽⁷⁾
 - Traditional herbal medicinal product for symptomatic relief of itching and burning associated with hemorrhoids. ⁽⁷⁾
 - Indicated in edemas, varicose veins, hemorrhoids, capillary fragility, erythema, and in post-phlebitis recoveries. ⁽²⁾
 - Used in cases slowness sensation and legs fatigue and to alleviate the congested feet. ⁽⁴⁾
- Vasoconstrictive ^(6,8)
 - Capillary protective ^(6,8)
 - Anti-inflammatory ^(6,8)

ACTIVITIES AND PHARMACOLOGICAL STUDIES:

- **Venoconstriction properties:** venoconstriction properties of Ruscus extract have shown *in vitro* and *in vivo* models. Activity is attributed to result of α -adrenergic activation. ⁽⁸⁾
- **Effects on vascular permeability:** Antioedema effect reported for Ruscus extract has confirmed *in vitro* and *in vivo* studies. ⁽⁸⁾
- **Effects on lymphatic vessels:** In *in vivo* studies, administration of Ruscus extract improved the contractility of peripheral lymph vessels. ⁽⁸⁾
-

DOSAGE AND ADMINISTRATION:

Dosage and administration:

Oral Use:

Butcher's Broom Dry Extract may be found formulated in liquid and solid preparations.

Recommended dosage and administration are indicated in the European Union herbal monograph on *Ruscus aculeatus* L., rhizoma **EMA/HMPC/188804/2017**. ⁽⁷⁾

Topical use:

The Butcher's Broom Dry Extract may be found formulated in creams, lotions, emulsions, shampoo, and ointment, among others as astringent, light stabilizer, refreshing, skin conditioning, soothing, and tonic.

Undesirable effects:

There are no reported toxic effects or intolerance phenomenon to normal use doses.

Nausea, gastrointestinal complaints, diarrhoea, lymphocytic colitis may occur ⁽⁵⁾

Precautions/Contraindications:

Hypersensitivity to the active substance. ⁽⁷⁾

The use in children and adolescents under 18 years of age has not been established due to lack of adequate data. ⁽⁷⁾

If there is inflammation of the skin or subcutaneous induration, ulcers, sudden swelling of one or both legs, cardiac or renal insufficiency, a doctor should be consulted. ⁽⁷⁾

If rectal bleeding occurs a doctor should be consulted. ⁽⁷⁾

BIBLIOGRAPHY AND OTHER REFERENCE SOURCES:

1. Peris, J.B., Stübing, G., Vanaclocha, B. Fitoterapia aplicada. Valencia. 1995.
2. Fitoterapia. Vademécum de prescripción. Masson, S.A. 3ª Ed. Barcelona 1998.
3. Blumental. The Complete German Commission E Monographs. Therapeutic Guide to Herbal Medicines. American Botanical Council. Austin, Texas 1998.
4. Pons, L., Parra, J.L. Ciencia cosmética. Bases fisiológicas y criterios prácticos. C.G.C.O.F. 1995.
5. Blumental/Goldberg/Brinckmann. Herbal Medicine. Expanded Commission E Monographs. 2000.
6. ESCOP Monographs. Second edition. 2003
7. European Union herbal monograph on *Ruscus aculeatus* L., rhizoma EMA/HMPC/188804/2017.
8. Assessment report on *Ruscus aculeatus* L., rhizome. EMA/HMPC/188805/2017.

Information contained in this Technical Scientific Report is believed to be accurate and is offered in good faith for the benefit of the user of the product. Select Botanical, S.L. cannot assume any liability or risk involved in the use of its products since the conditions of the use are beyond our control. The user of our product is responsible for compliance with all legal regulations applying to the use of our products, including patent laws.

Version 02/April2021

SELECT BOTANICAL – Barcelona

Offices;

C/Borí i Fontestà, 49
08017 Barcelona – España
sb@selectbotanical.com

SELECT BOTANICAL – Navarra

Manufacturing site:

Pol.Ind.Buñuel, C/B nº 5
31540 Buñuel (Navarra) – España
www.selectbotanical.com

